

## MEMORANDUM

---

Date: June 12, 2018

Project #: 21353

To: Steering Committee

From: Andy Daleiden, PE

Project: 2018 Billings Urban Area Long Range Transportation Plan

Subject: Public Comment Summary #1

---

This memorandum summarizes public feedback received to date for the 2018 Billings Urban Area Long Range Transportation Plan (LRTP). Public comments were collected through middle school outreach, an online survey and a public open house in May 2018.

## INTRODUCTION

The Yellowstone County Metropolitan Planning Organization (MPO) conducted a public outreach effort in order to introduce the LRTP and collect feedback on goals, objectives and needs. Outreach efforts included:

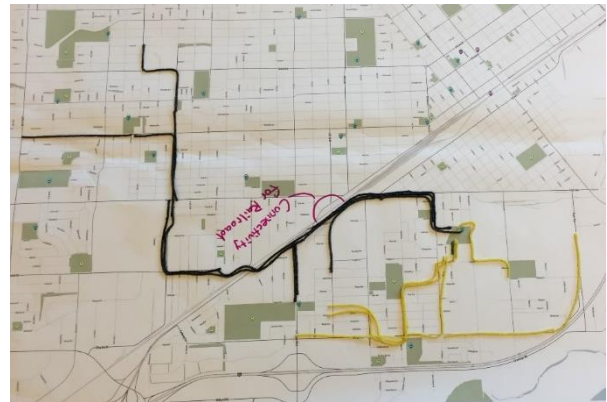
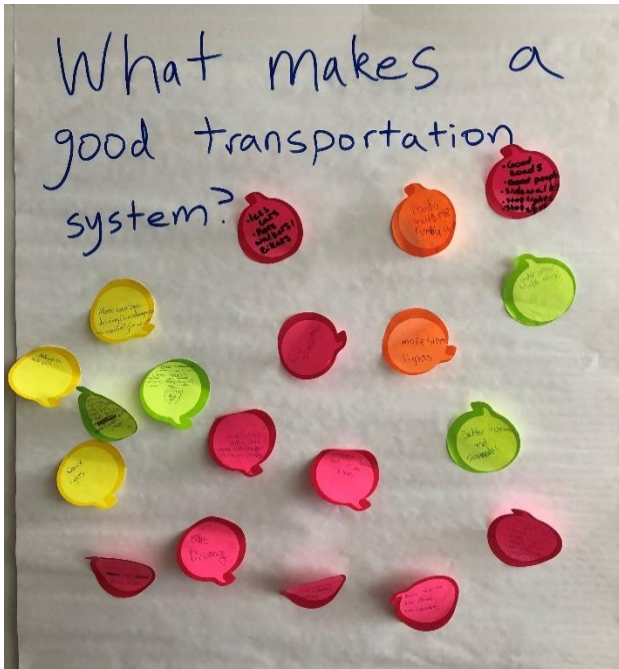
- Riverside Middle School classroom outreach
- Public open house
- Online survey

## MIDDLE SCHOOL OUTREACH

Kittelson & Associates, Inc. (Kittelson) presented to three classes (two geography classes and one social studies class) at the Riverside Middle on Tuesday May 15<sup>th</sup>, 2018. These three classes included approximately 50 students. Kittelson presented information on transportation planning and then asked the students to map how they traveled to school and to after school or weekend activities. The students mapped the routes they took, and color coded them by what mode of transportation they used (see images on next page). The students then discussed issues about these routes. Next the students were asked “What makes a good transportation system?”. They wrote these ideas down on sticky notes



and placed them on a board for group discussion (see comment example below). These notes were also presented at the public open house.



Their ideas for a good transportation system included (for detailed comments from this outreach refer to Appendix A), but not limited to:

- More sidewalks
- Improve sidewalks
- Test drivers every 20 years
- Hoverboard
- Fix potholes
- More buses
- Better signal timing

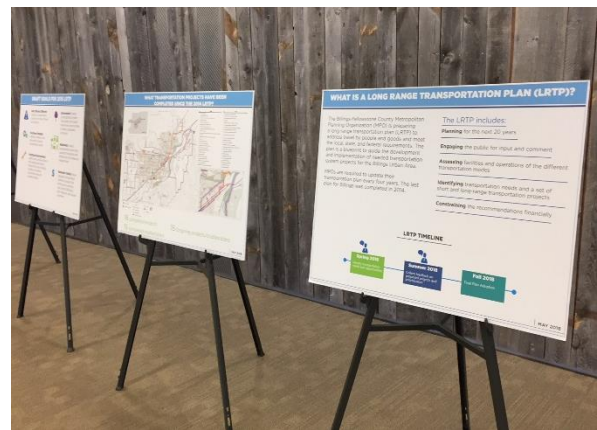


## PUBLIC OPEN HOUSE

The public open house was held at the Billings Library from 4 pm to 7 pm. The purpose of the open house was to give the public an opportunity to learn about the plan, review technical information about the LRTP, and provide comment on the following three items:

- What goals are most important to you for the plan?
- What transportation needs and opportunities exist today?
- What you like to see for the future transportation system?

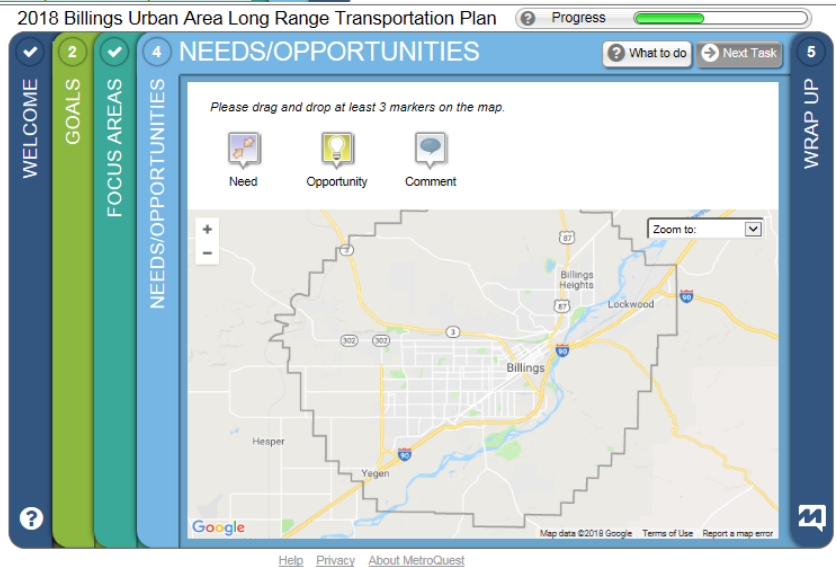
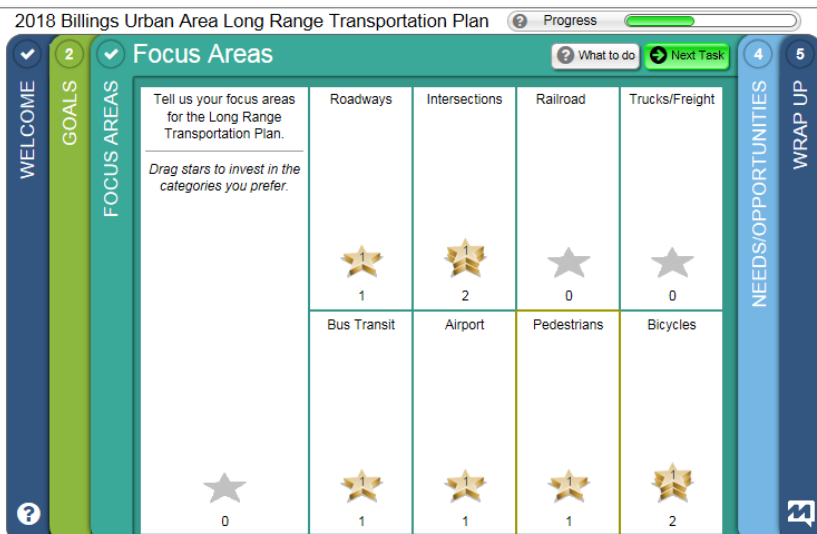
Attendees were able to review materials on the LRTP, provide mapped comments regarding needs and opportunities, and provide feedback on goals and focus areas. 25 people signed into the meeting, 32 map comments were received and three comment sheets. Appendix B includes the open house display boards. Appendix C includes the completed comment sheets from the open house. Appendix D includes the sign-in sheet from the open house.





## ONLINE SURVEY

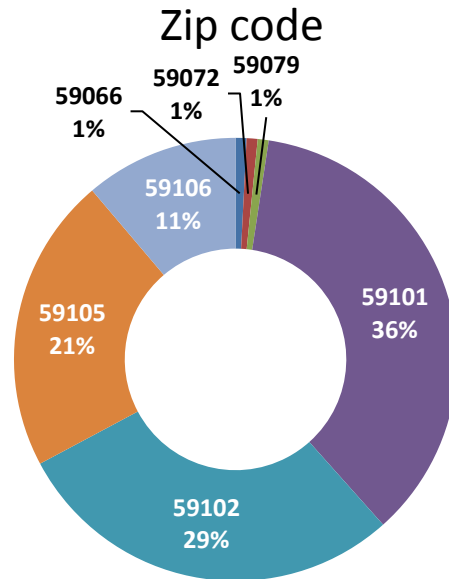
An online survey was developed to provide information on the LRTP, collect feedback on goals, priorities and allow users to map their comments regarding needs and deficiencies. The same questions were asked on the survey as at the public open house. The online survey ran from May 14<sup>th</sup> to May 29<sup>th</sup> and had 139 participants. The site is no longer active, but the demo site can be viewed at: <https://2018BillingsLRTP-demo.metroquest.com>



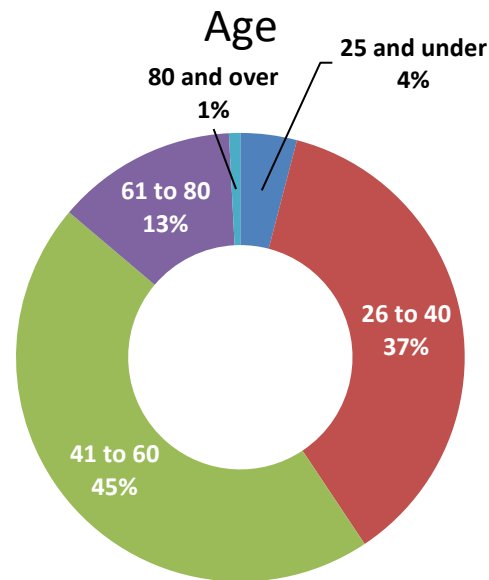
# COMMENT SUMMARY

## DEMOGRAPHICS

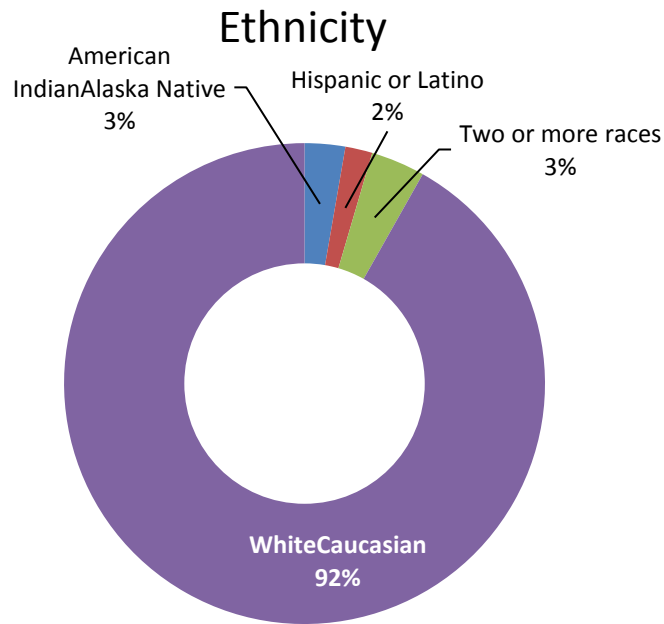
1) What zip code do you live in?



2) What is your age?



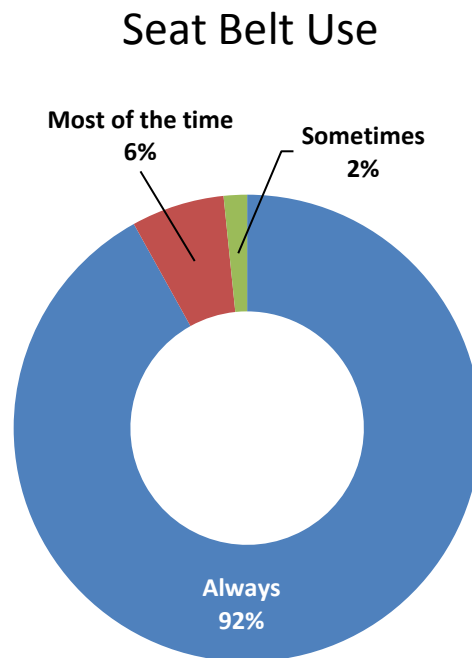
3) What is your ethnicity?



US Census Data Demographics for Yellowstone County

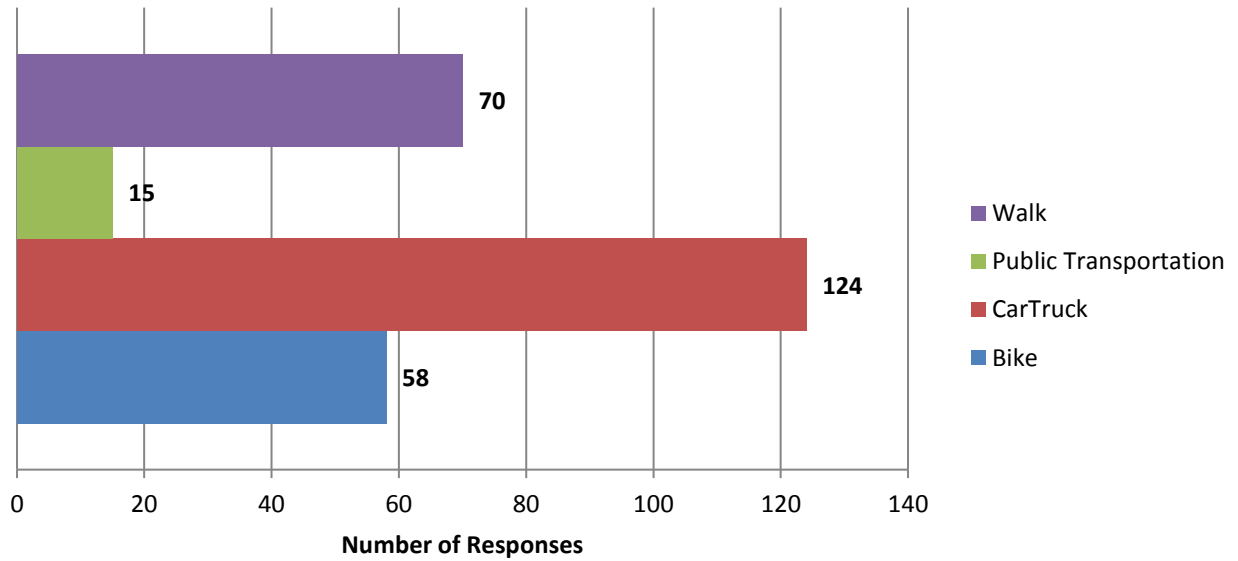
White/Caucasian:91% | American Indian/Alaska Native:4.6% | Hispanic or Latino:5.5% | Two or more races:2.9%

4) How often do you wear a seat belt?



5) What mode of transportation do you use (check all)?

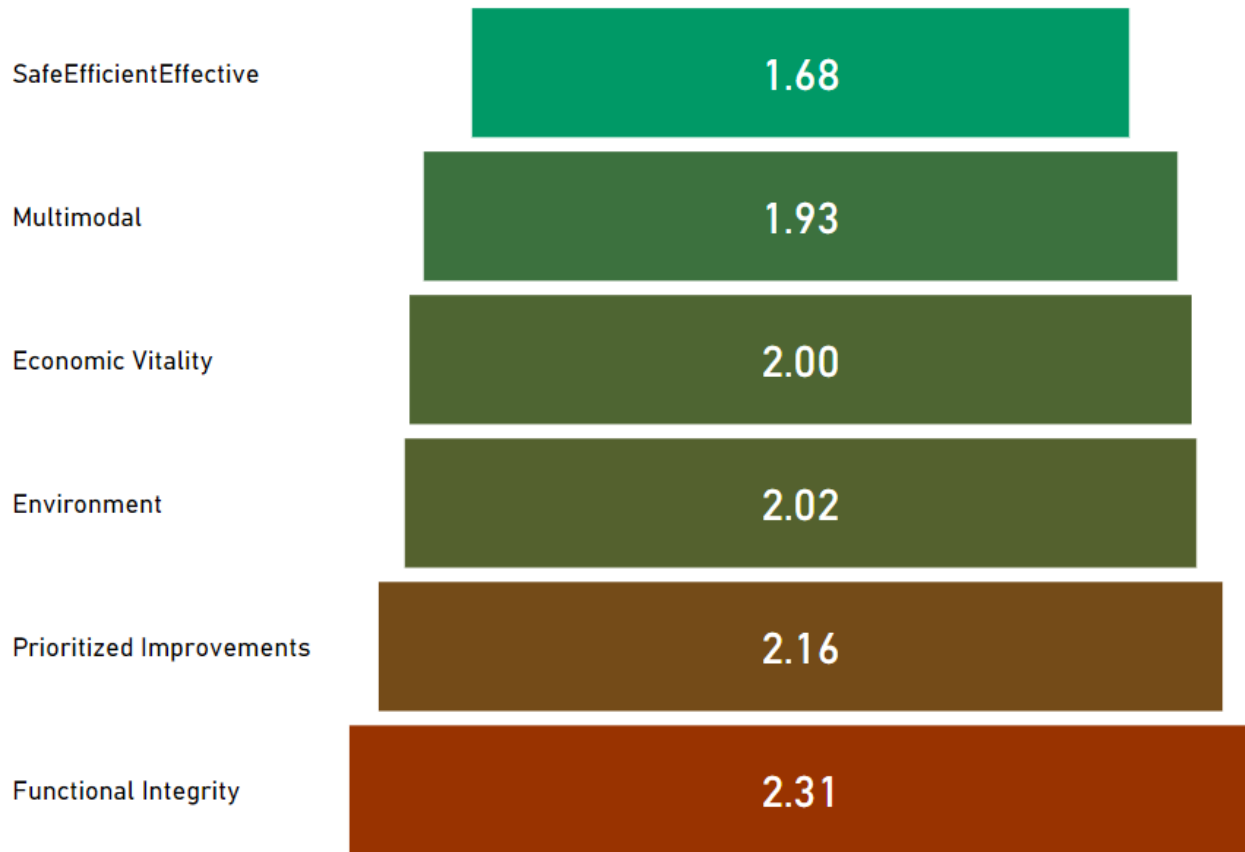
### Mode of Transportation



### GOALS

Prioritizing goals helps the MPO guide future project prioritization. Survey respondents were asked to rank their top 3 transportation goals.

- **Safe, Efficient, Effective:** Develop a transportation system that is safe, efficient, and effective
- **Functional Integrity:** Optimize, preserve, and enhance the existing transportation system
- **Prioritized Improvements:** Identify and prioritize projects that mitigate deficiencies, maximize the use of existing facilities, and balance anticipated needs with available funding
- **Environment:** Develop a transportation system that protects the natural environment and promotes a healthy, sustainable
- **Multimodal:** Create a transportation system that supports the practical and efficient use of all modes of transportation
- **Economic Vitality:** Ensure adequate transportation facilities to support the existing local economy and connect Billings to local, regional, and national commerce



\* Note that the highest rank is 1, so small rankings and averages are better than high ones.

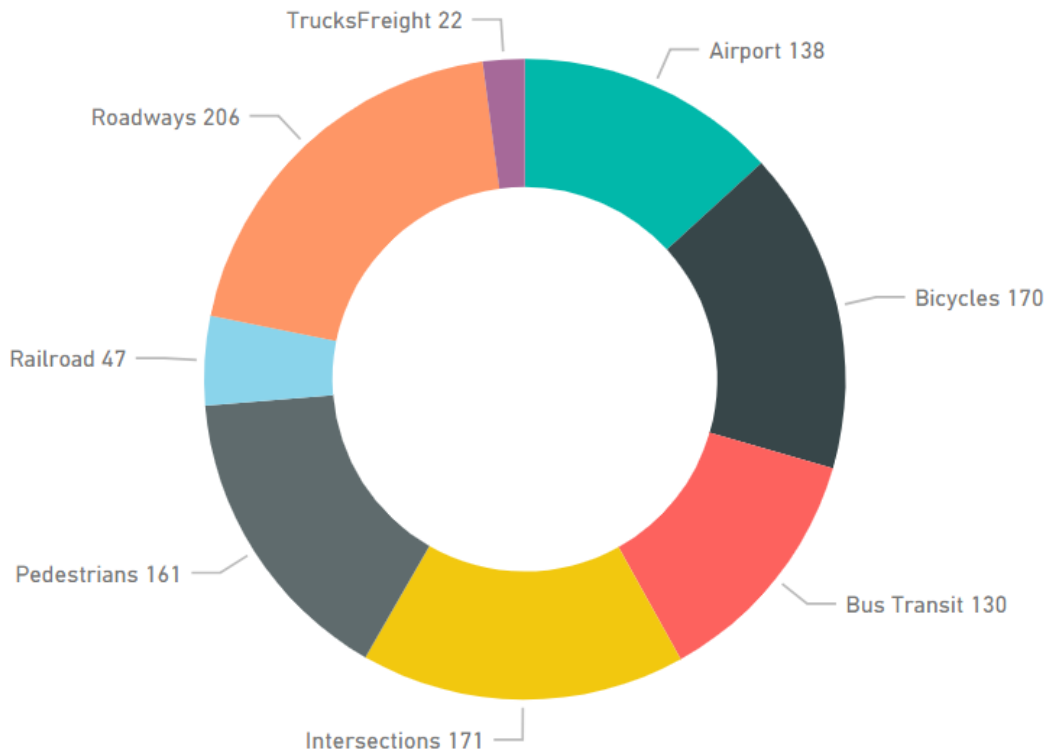
## FOCUS AREAS

Survey respondents were asked to identify their focus areas for the Billings Urban Area Long Range Transportation Plan.

- Roadways
- Intersections
- Railroad
- Truck/Freight
- Bus/Transit
- Airport
- Pedestrians
- Bicycles

The chart on the next page summarizes the number of chips/coins dropped into a focus area. The focus areas with the most chips/coins were roadways, intersections, and bicycles followed by pedestrians, airport, and bus transit followed by railroad and truck/freight.

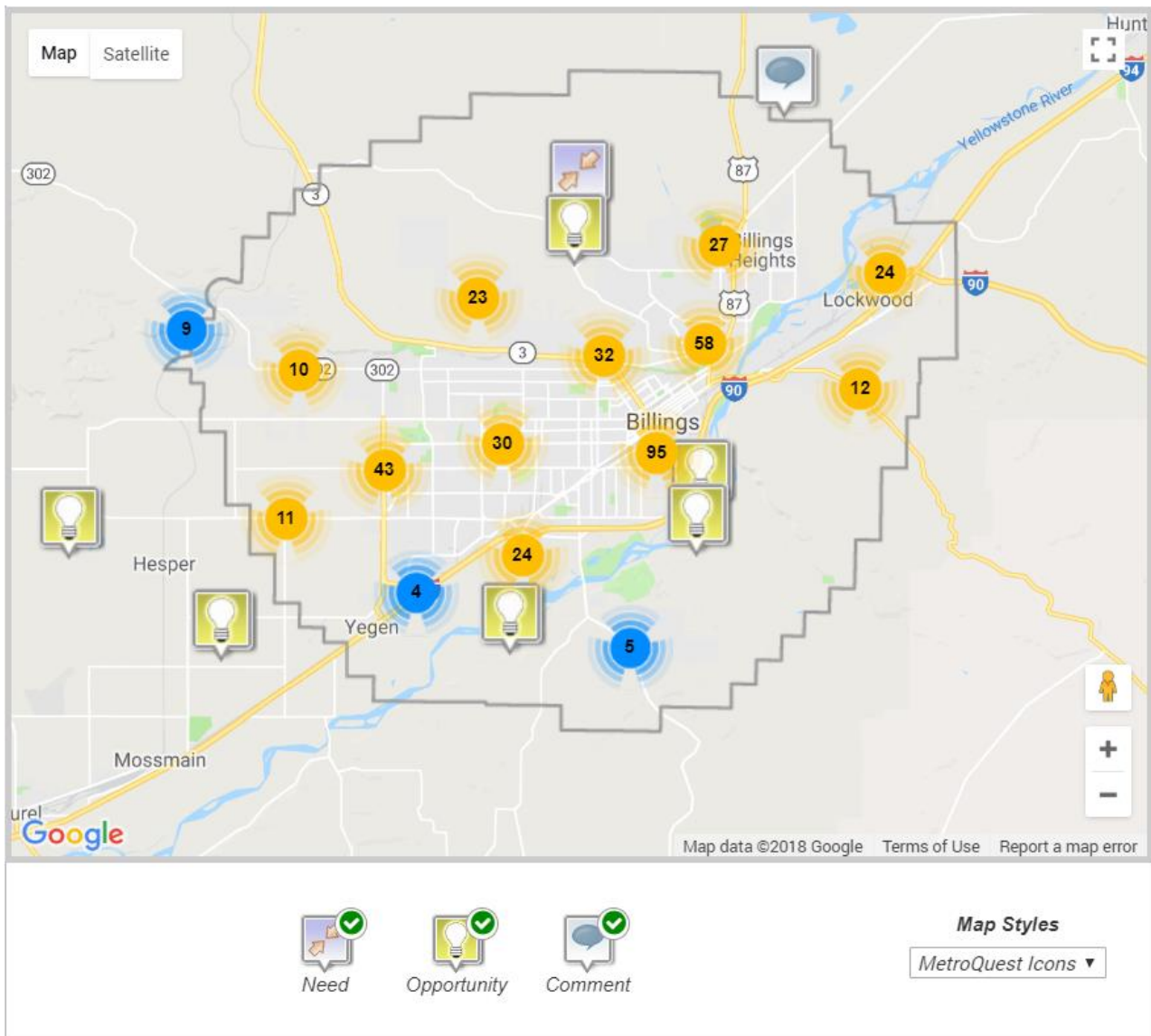




## NEEDS AND OPPORTUNITIES

Survey respondents were asked to use the map to tell us about needs and opportunities with the existing transportation system in the Billings Urban Area. A spreadsheet of these comments is included in Appendix E. In total, 418 map comments were provided by respondents, which fell into the following categories: 89 general comments, 103 comments on opportunities, and 226 comments on needs. The map on the next page provides a snapshot of where comments were provided within the study area.

Kittelson is evaluating the comments in more detail for further use in the development of the project list for the LRTP. In short, the comments, needs and opportunities included a range of issues and project types, including but not limited to pedestrian crossings, bicycle facilities, more bus frequency, at-grade railroad crossings enhancements, roadway extensions, new roadway connections from Highway 3 to the Interstate, and intersection enhancements.



Appendix A Middle School Outreach  
Comments - What Makes a  
Good Transportation System?

Appendix B Public Open House #1  
Display Boards

Appendix C Public Open House #1  
Comment Sheets



Appendix D Public Open House #1  
Sign-In Sheet

Appendix E Detailed Map Comments from  
Online Survey